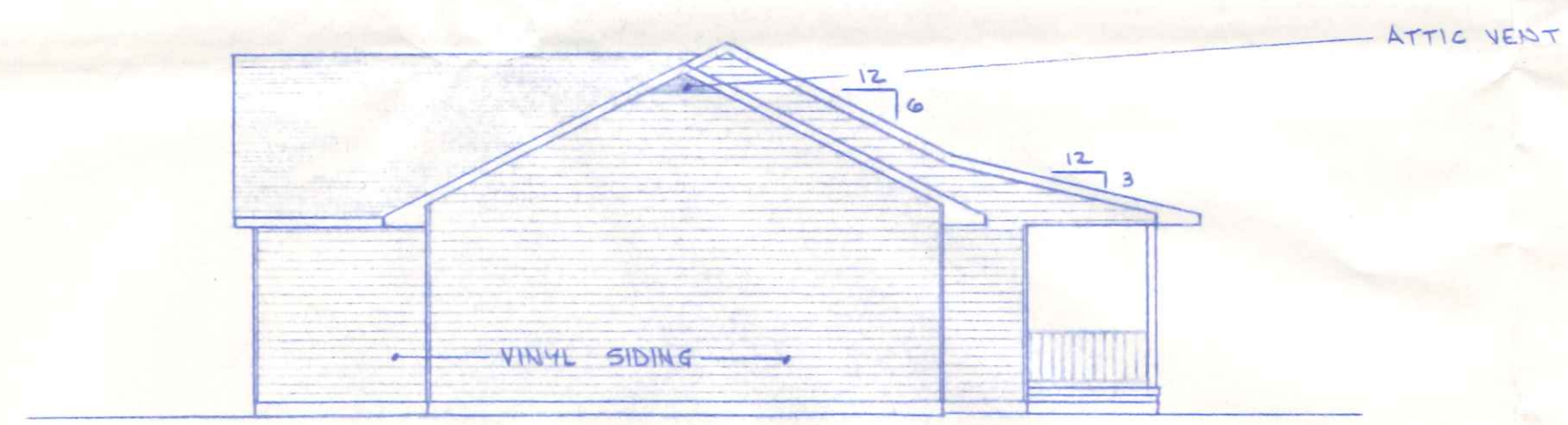
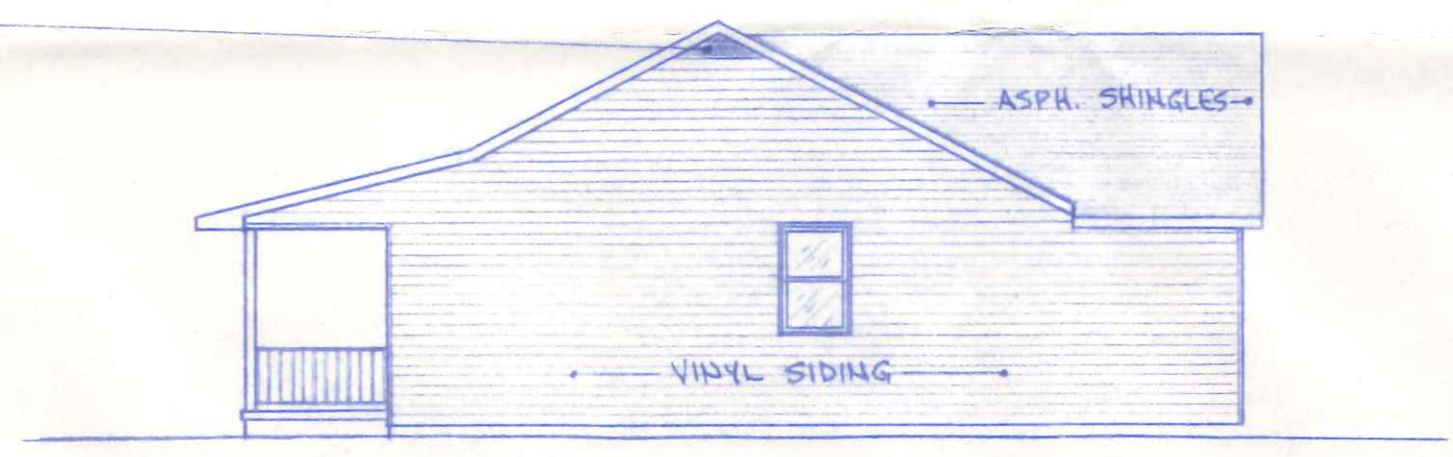


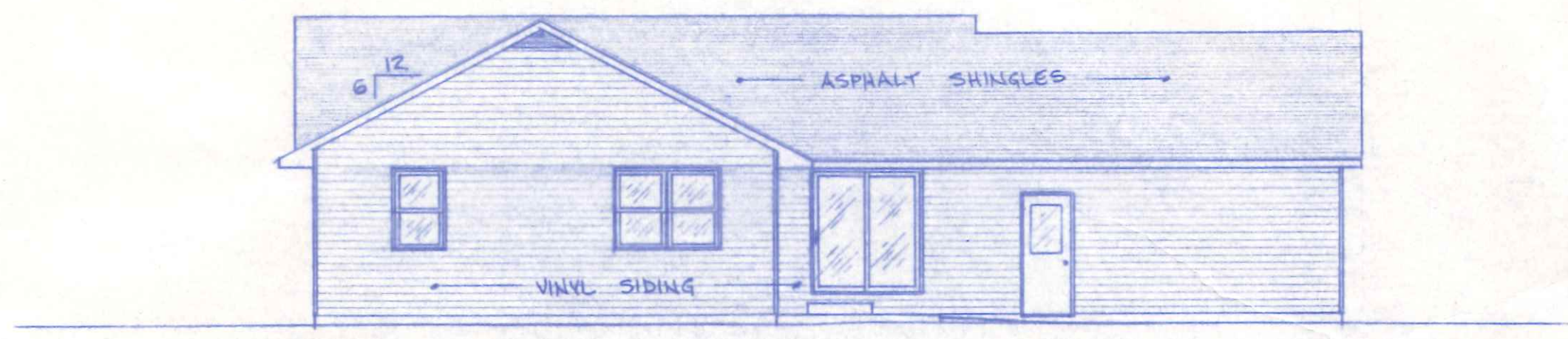
FRONT ELEVATION  
1/4" = 1'-0"



LEFT SIDE ELEVATION  
1/8" = 1'-0"



RIGHT SIDE ELEVATION  
1/8" = 1'-0"



REAR ELEVATION  
1/8" = 1'-0"

975 HARMONY

BECK CONSTRUCTION CO.

SCALE: NOTED	APPROVED BY:	DRAWN BY R.D.S.
DATE: NOV. 1986		REVISED

ELEVATIONS

PLAN NO. 235 DRAWING NUMBER  
1 OF 4

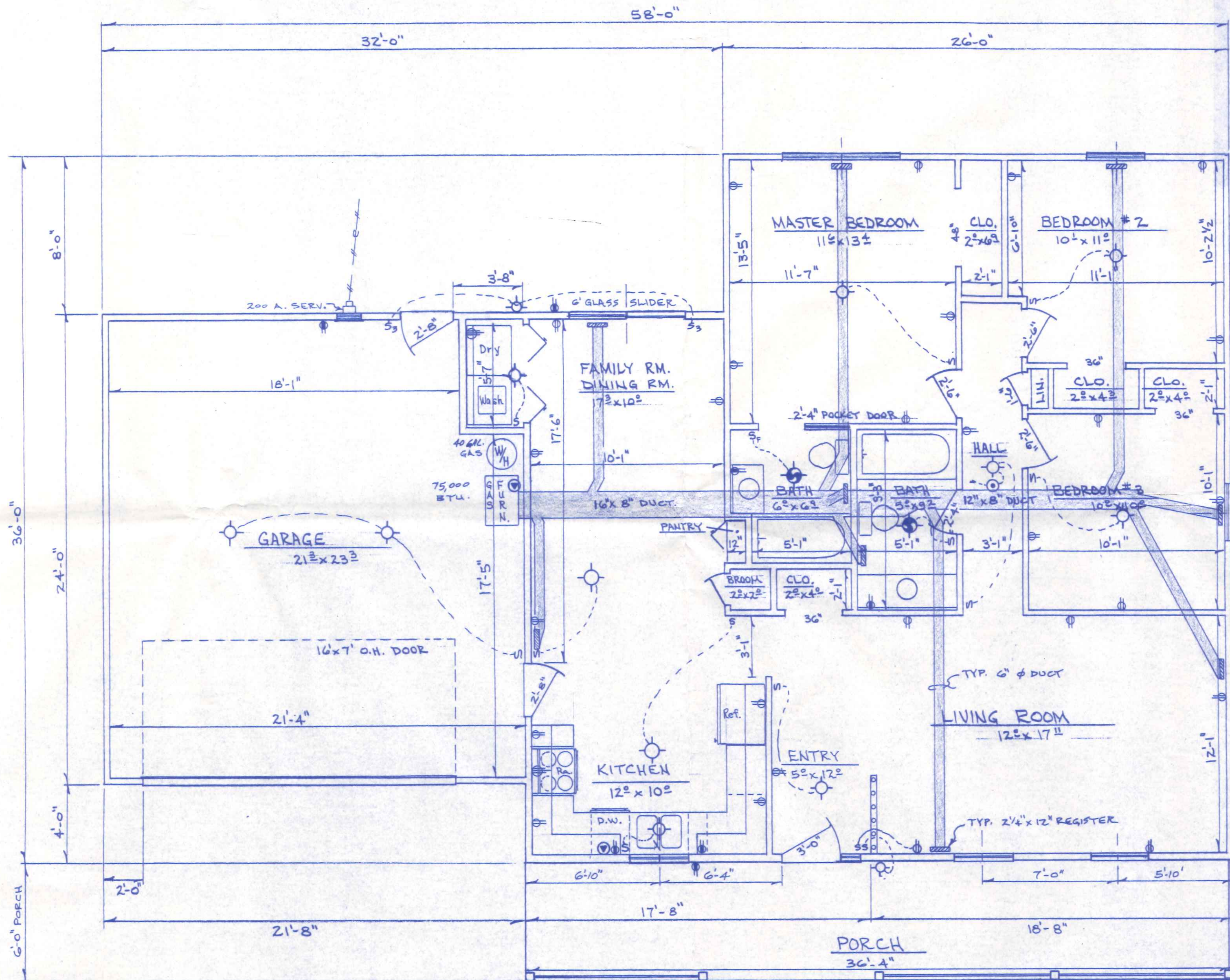






ELECTRICAL LEGEND

- ◊ CEILING LIGHT
- WALL LIGHT
- ⊙ CEILING CIRCULATING FAN
- ⊙ CEILING LIGHT WITH CIRCULATING FAN
- ⊙ CEILING LIGHT WITH EXHAUST FAN
- ⊙ EXTERIOR FLOOD LIGHT
- ⊙ PRIMARY POWERED SMOKE DETECTOR WITH BATTERY BACKUP
- ⊙ SPECIAL OUTLET AS NOTED
- ⊙ 120V - 20A DUPLEX RECEPTACLE
- ⊙ 120V - 20A DUPLEX RECEPTACLE, 1 SWITCHED
- ⊙ 120V - 20A DUPLEX RECEPTACLE WITH G.F.C.I. PROTECTION
- ⊙ 240V APPLIANCE OUTLET
- ⊙ 120V - 20A LIGHT SWITCH
- ⊙ 120V - 20A FAN SWITCH
- ⊙ 120V - 20A 3 WAY LIGHT SWITCH



AREAS (Gross)  
 GARAGE 500 SQ. FT.  
 LIVING AREA: 1245 SQ. FT.

FLOOR PLAN  
 1/4" = 1'-0"

BECK CONSTRUCTION CO.

SCALE: 1/4" = 1'-0"    APPROVED BY:    DRAWN BY: E.D.S.  
 DATE: Nov. 1988    REVISED

ELECTRICAL & HEATING LAYOUT

PLAN NO. 235    DRAWING NUMBER 3 OF 4



